

NATIONAL PIG SLAUGHTER MONITOR

PREPARED BY NEW ZEALAND PORK

PIG KILL FULL WEEK ENDING ¹ :		4/7/2010		Week 40		WEEKLY KILL COMPARISON				
		NUMBER OF CARCASSES	WEIGHT (KG)	AVG. WEIGHT (KG)	WHOLE CARCASSES CONDEMNED	TOTAL KILL ²	LAST WK	CHANGE	CUMULATIVE YEAR TO DATE ³	CUMULATIVE YEAR TO DATE LAST YEAR
PIGS < 50 KG	NTH IS	544	22,905	42.10	2	546	507	0.08	22,104	23,691
	STH IS	364	15,184	41.71	2	366	376	-0.03	16,869	17,107
	NZ	908	38,089	41.95	4	912	883	0.03	38,973	40,798
PIGS 50-65KG	NTH IS	2,031	119,617	58.90	1	2,032	1,960	0.04	95,708	96,032
	STH IS	2,039	121,234	59.46	2	2,041	2,041	0.00	80,099	78,010
	NZ	4,070	240,851	59.18	3	4,073	4,001	0.02	175,807	174,042
PIGS 65-75 KG	NTH IS	1,921	133,375	69.43	1	1,922	1,757	0.09	65,871	70,528
	STH IS	4,384	307,499	70.14	11	4,395	4,180	0.05	146,561	134,500
	NZ	6,305	440,874	69.92	12	6,317	5,937	0.06	212,432	205,028
PIGS >75 KG	NTH IS	493	40,237	81.62	0	493	536	-0.08	15,455	25,405
	STH IS	2,129	176,661	82.98	0	2,129	2,103	0.01	67,828	69,103
	NZ	2,622	216,898	82.72	0	2,622	2,639	-0.01	83,283	94,508
TOTAL PRIME PIGS	NTH IS	4,989	316,134	63.37	4	4,993	4,760	0.05	199,138	215,656
	STH IS	8,916	620,576	69.60	15	8,931	8,700	0.03	311,357	298,720
	NZ	13,905	936,710	67.36	19	13,924	13,460	0.03	510,495	514,376
CHOPPERS	NTH IS	93	14,519	156.12	0	93	120	-0.23	4,233	4,315
	STH IS	220	29,744	135.20	1	221	285	-0.22	8,422	7,893
	NZ	313	44,263	141.42	1	314	405	-0.22	12,655	12,208
TOTAL	NZ	14,218	980,973	69.00	20	14,238	13,865	0.03	523,150	526,584

1 Information gathered weekly from all abattoirs licensed to kill pigs.

2 Includes carcasses (after removal of condemned parts) inspected and passed for human consumption, and whole carcasses condemned up to and at scales

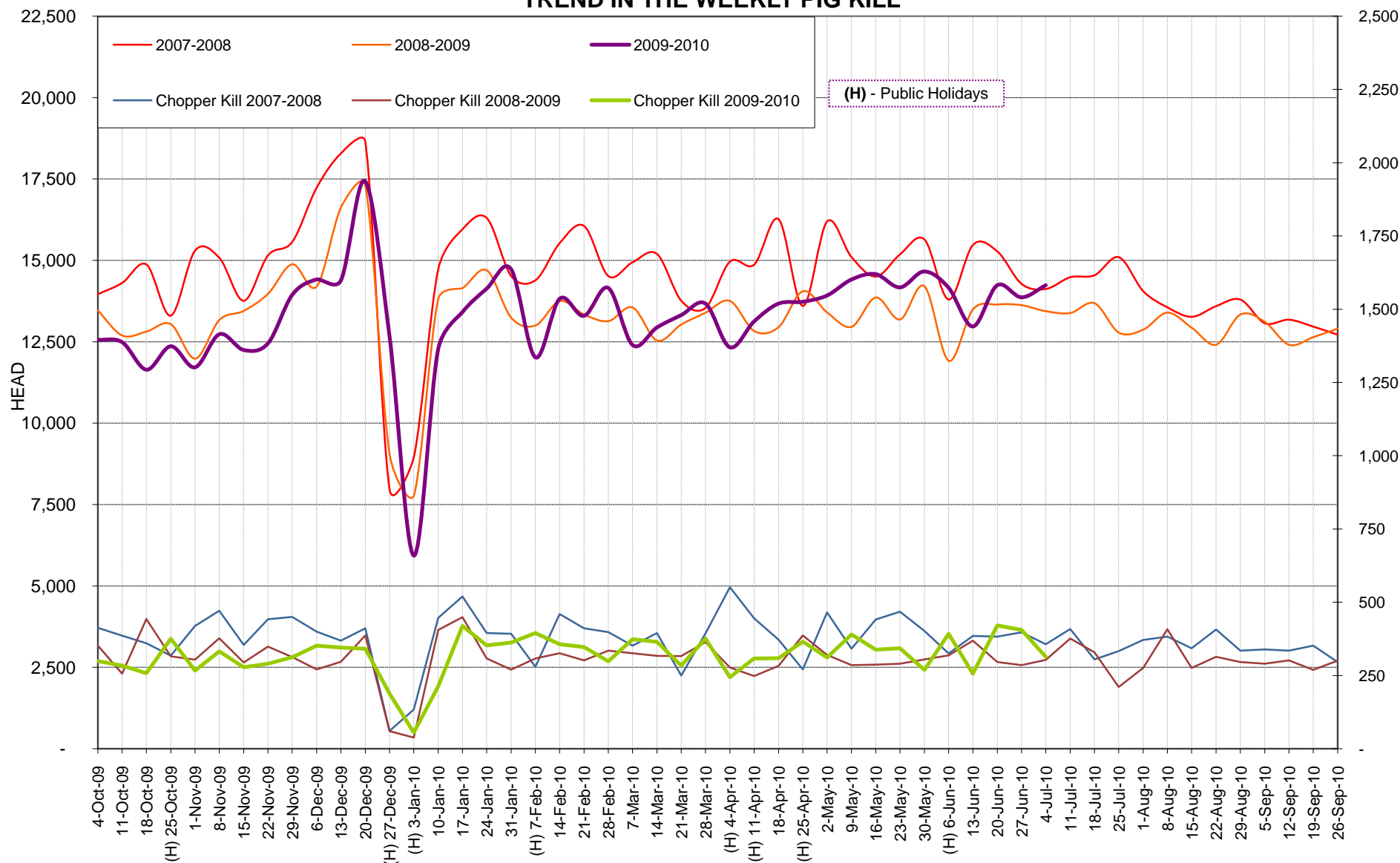
3 Meat Year (1 October – 30 September) week to date

Contact: Grant Boston, New Zealand Pork Ph 04 917 4750 Fax 04 385 8522 email: grant.boston@pork.co.nz

PIG KILL WEEK 40 09-10

DISCLAIMER: This information (including any attachments) is confidential. NZPork is not responsible for any changes made to this message and/or any attachments after sending by NZPork. All due care has been taken in preparing this information, however New Zealand Pork does not guarantee its accuracy. To the extent possible New Zealand Pork's liability is excluded, and persons acting in reliance on the information do so at their own risk.

TREND IN THE WEEKLY PIG KILL



PIG KILL WEEK 40 09-10

DISCLAIMER: This information (including any attachments) is confidential. NZPork is not responsible for any changes made to this message and/or any attachments after sending by NZPork. All due care has been taken in preparing this information, however New Zealand Pork does not guarantee its accuracy. To the extent possible New Zealand Pork's liability is excluded, and persons acting in reliance on the information do so at their own risk.